

WEAR CHECK

Your specialist in Oil, Fuel, Grease & Coolant Analysis

Petrol Engine



UNIT NO.	338-IA	DATE SAMPLED	25-Jun-12	COMPARTMENT NAME	motul 5200
UNIT MAKE	Suzuki	DATE RECEIVED	25-Jun-12	COMPARTMENT MAKE	
UNIT MODEL	GSXR 750	DATE REPORTED	06-Dec-12	COMPARTMENT MODEL	
UNIT SERIAL NO.				COMPARTMENT SERIAL NO.	
SYSTEM CAPACITY	Ltrs			MACHINE LOCATION	Brisbane

DATE SAMPLED		25-Jun-12	23-Jun-12
SAMPLE NO.		7745476	7745461
COMPONENT	Hrs	70000	
MACHINE	Hrs	70000	0
OIL	Hrs	5000	0
OIL MAKE		Motul	Motul
OIL TYPE		Motul 5100	Motul 5100
OIL GRADE		10W50	10W50
OIL ADDED	Ltrs		
FILTER	Hrs	5000	
OIL CHANGED		Changed	

Metals (ppm)

Aluminium (Al)	5	<1
Copper (Cu)	10	<1
Chromium (Cr)	<1	<1
Iron (Fe)	18	1
Lead (Pb)	4	<1
Tin (Sn)	1	<1
Nickel (Ni)	2	<1

Contaminants and Additives (ppm)

Silicon (Si)	34	21
Boron (B)	61	79
Sodium (Na)	7	7
Potassium (K)	<1	1
Phosphorus (P)	1021	903
Molybdenum (Mo)	4	2
Magnesium (Mg)	51	7
Calcium (Ca)	2359	2386
Zinc (Zn)	1099	1009

Physical Tests

Water (%)	<0.1	<0.1
Nitration (Abs)	7.7	5.2
Viscosity (cSt,40°C)	79	117
PQ Index	<10	<10
Glycol (Abs)	<0.1	0.5
Petrol (% by Distillation)	3.0	

WC
10002326917



UIN 0302D97

DIAGNOSIS

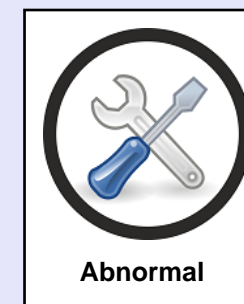
Current Sample :

All wear levels appear within acceptable limits for first sample. Silicon level (dirt/sealant material) satisfactory. Water content acceptable. Minor fuel dilution occurring. Lubricant manufacturers published specifications indicate viscosity low for specified oil type.

Action: As oil and filter(s) already changed, Check fuelling system. Resample at a reduced service interval to monitor and establish wear trend.

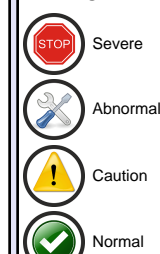
Last Sample :

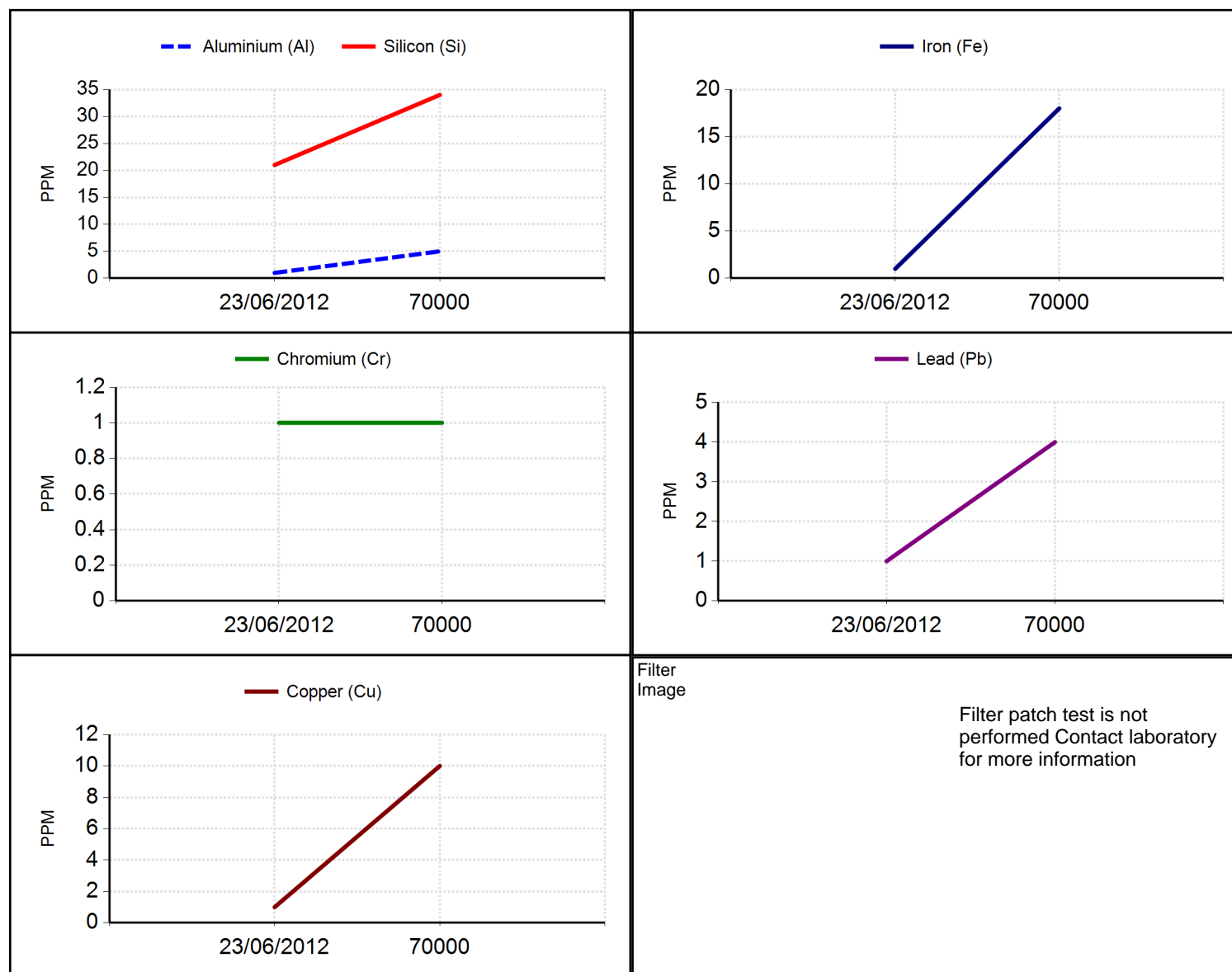
Results were obtained on the sample as received.



Abnormal

LEGEND





"This analysis report is dependent upon the accurate completion of the sample submission sheet and correct sampling techniques as advised. The analysis is intended as an aid only in predicting mechanical wear and should not be regarded as a substitute for proper servicing or mechanical inspection. The company does not accept any liability whatsoever in respect of any loss or damage (including loss of profits, economic or other consequential loss or damage) however caused which may arise directly, or indirectly, as a result of the matters referred to in this analysis report."

MIE Enterprises
Attn: Accounts Payable
3 Redemptora Road
HENDERSON WA 6166

0007 v1.4



LABORATORY SITES:

Brisbane: 41 Yarraman Place
Virginia QLD 4014
Phone: (07) 3326 6300
Fax: (07) 3326 6321

Perth: Unit 1/30 Oxleigh Drive
Malaga WA 6090
Phone: (08) 9347 3244
Fax: (08) 9249 8631

Sydney: 2/171-175 Newton Road
Werrihill Park NSW 2164
Phone: (02) 8786 3150
Fax: (02) 9725 5071

Singapore: 14 Little Road
#07-018/08-01
Tropical Industrial Building
Singapore 536987
Phone: 6283 9268
Fax: 6283 9689

New Zealand: 74 Seaview Road
Lower Hutt Wellington NZ 5010
Phone: (64) 04 586 6202
Fax: (64) 04 586 6262