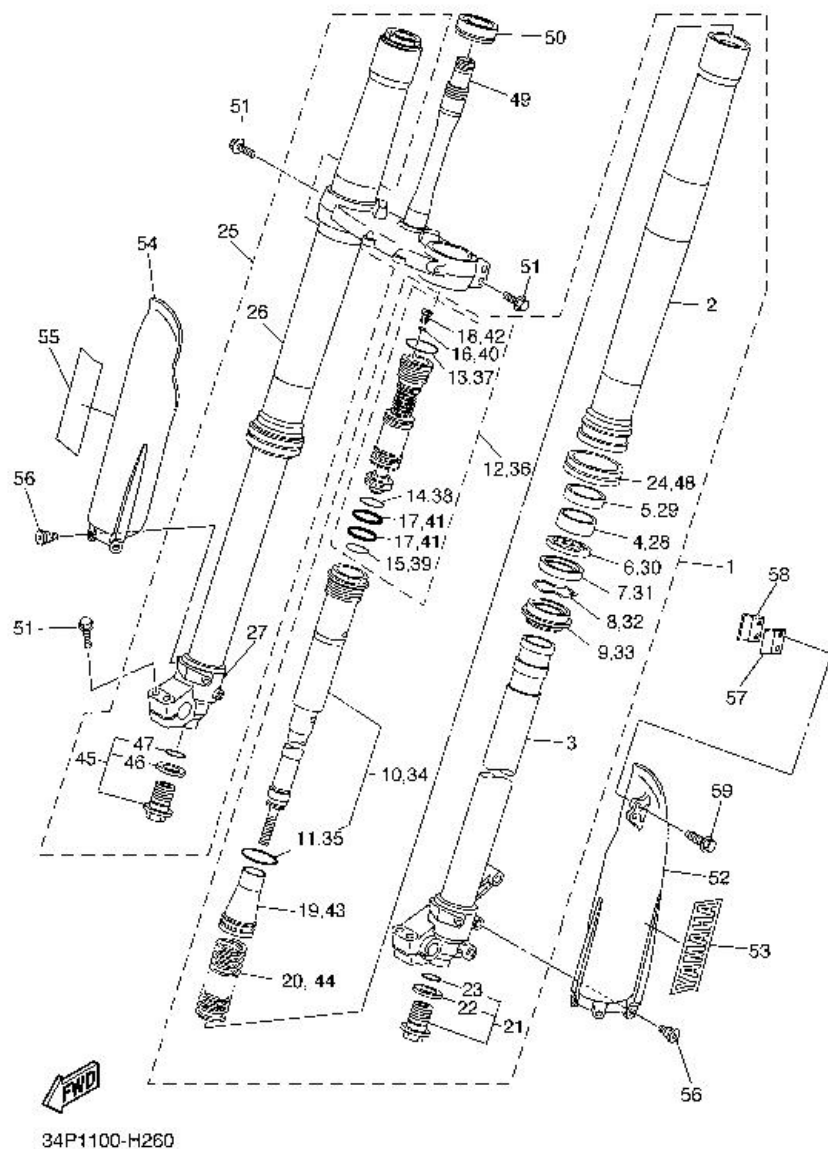
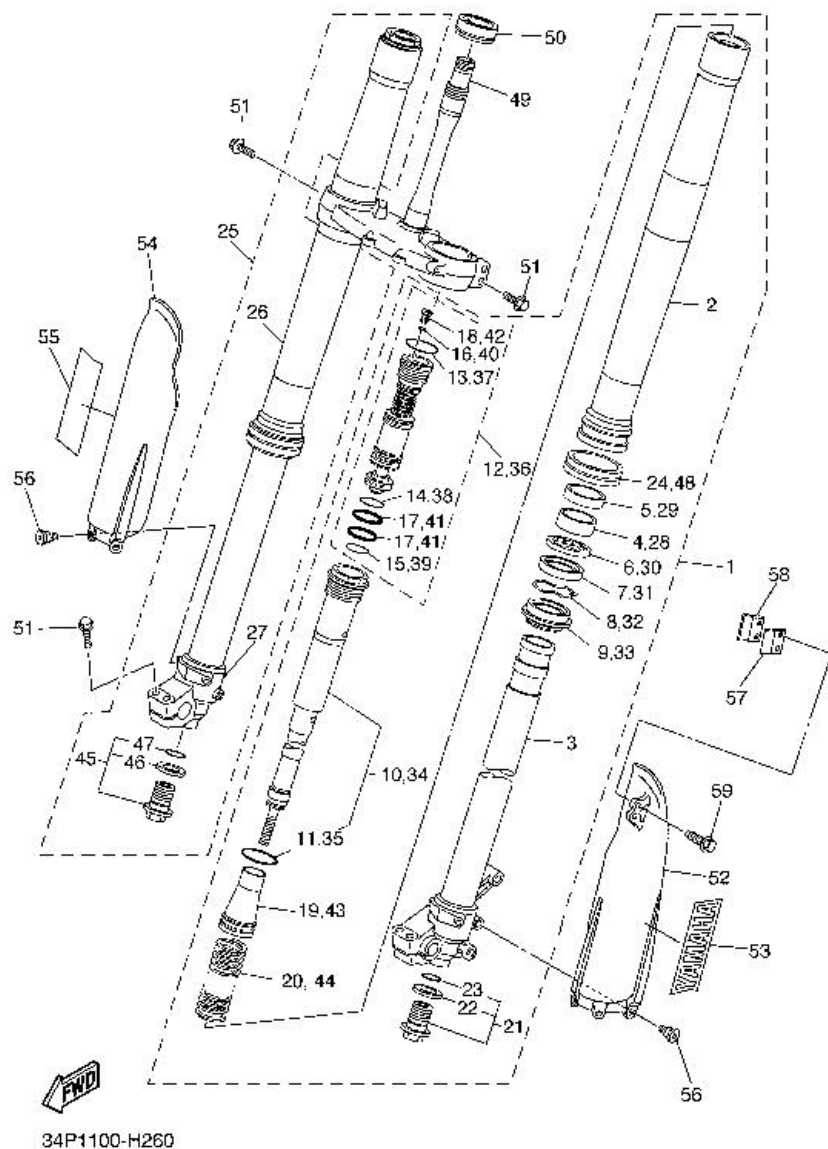


Fig. 26 FRONT FORK



Ref. No.	Part No.	Description		Remarks
1	34P-23102-10	FRONT FORK ASSY (L.H)	1	
2	2S2-23136-00	TUBE, OUTER (RIGHT)	1	
3	2S2-23120-00	INNER TUBE COMP.2	1	
4	5XE-23171-L0	PISTON, FRONT FORK	1	
5	5XE-23125-L0	METAL, SLIDE 1	1	
6	5XC-23146-10	WASHER, OIL SEAL	1	
7	1C3-23145-M0	OIL SEAL	1	
8	5XE-23153-L0	RING, SNAP	1	
9	5XE-23144-L0	SEAL, DUST	1	
10	34P-23170-00	CYLINDER COMP., FRONT FORK	1	
11	1C3-23147-L0	O-RING	1	
12	34P-2316A-00	VALVE COMP.	1	
13	1C3-23188-L0	O-RING	1	
14	1C3-23188-N0	O-RING	1	
15	1C3-23188-P0	O-RING	1	
16	1C3-23188-R0	O-RING	1	
17	1AE-23147-00	O-RING	2	
18	1C3-23190-L0	AIR VALVE COMP.	1	
19	1C3-23142-L0	SEAT, SPRING UPPER	1	
20	2S2-23141-L1	SPRING, FRONT FORK(K=4.6N/MM)	1	
21	5XC-23111-00	BOLT, CAP	1	
22	2HH-23158-L0	GASKET	1	
23	276-23114-00	GASKET	1	
24	5XC-2314F-00	PROTECTOR GUIDE COMP., 1	1	
25	34P-23103-10	FRONT FORK ASSY (R.H)	1	
26	2S2-23136-00	TUBE, OUTER (RIGHT)	1	
27	2S2-23110-00	INNER TUBE COMP.1	1	

Fig. 26 FRONT FORK



Ref. No.	Part No.	Description		Remarks
28	5XE-23171-L0	PISTON, FRONT FORK	1	
29	5XE-23125-L0	METAL, SLIDE 1	1	
30	5XC-23146-10	WASHER, OIL SEAL	1	
31	1C3-23145-M0	OIL SEAL	1	
32	5XE-23153-L0	RING, SNAP	1	
33	5XE-23144-L0	SEAL, DUST	1	
34	34P-23170-00	CYLINDER COMP., FRONT FORK	1	
35	1C3-23147-L0	O-RING	1	
36	34P-2316A-00	VALVE COMP.	1	
37	1C3-23188-L0	O-RING	1	
38	1C3-23188-N0	O-RING	1	
39	1C3-23188-P0	O-RING	1	
40	1C3-23188-R0	O-RING	1	
41	1AE-23147-00	O-RING	2	
42	1C3-23190-L0	AIR VALVE COMP.	1	
43	1C3-23142-L0	SEAT, SPRING UPPER	1	
44	2S2-23141-L1	SPRING, FRONT FORK(K=4.6N/MM)	1	
45	5XC-23111-00	BOLT, CAP	1	
46	2HH-23158-L0	GASKET	1	
47	276-23114-00	GASKET	1	
48	5XC-2314F-00	PROTECTOR GUIDE COMP., 1	1	
49	2S2-23340-10	UNDER BRACKET COMP.	1	
50	93332-00081	BEARING	1	
51	90105-08154	BOLT, FLANGE	8	
52	5XC-2315H-00	PROTECTOR 1	1	
53	4XL-2153A-10	EMBLEM, YAMAHA	1	
54	5XC-2315J-00	PROTECTOR 2	1	

